



BS2
Penki kontinentai group

A-SERIES™ ATM ACCESS
MANAGEMENT SYSTEM

PENKI KONTINENTAI GROUP



UAB „PENKIŲ
KONTINENTŲ
KOMUNIKACIJŲ
CENTRAS“



UAB „PENKIŲ
KONTINENTŲ,
INVESTICIJOS

25+
years of
experience

90+
partners around
the world

1500+
international
customers

400+
dedicated
professionals

7
subsidiaries in
Azerbaijan, Georgia,
Kazakhstan, Kyrgyzstan,
Uzbekistan, Latvia,
Estonia and Lithuania

25+
years of
partnership with
Diebold Nixdorf

80
countries where
activities are
carried out

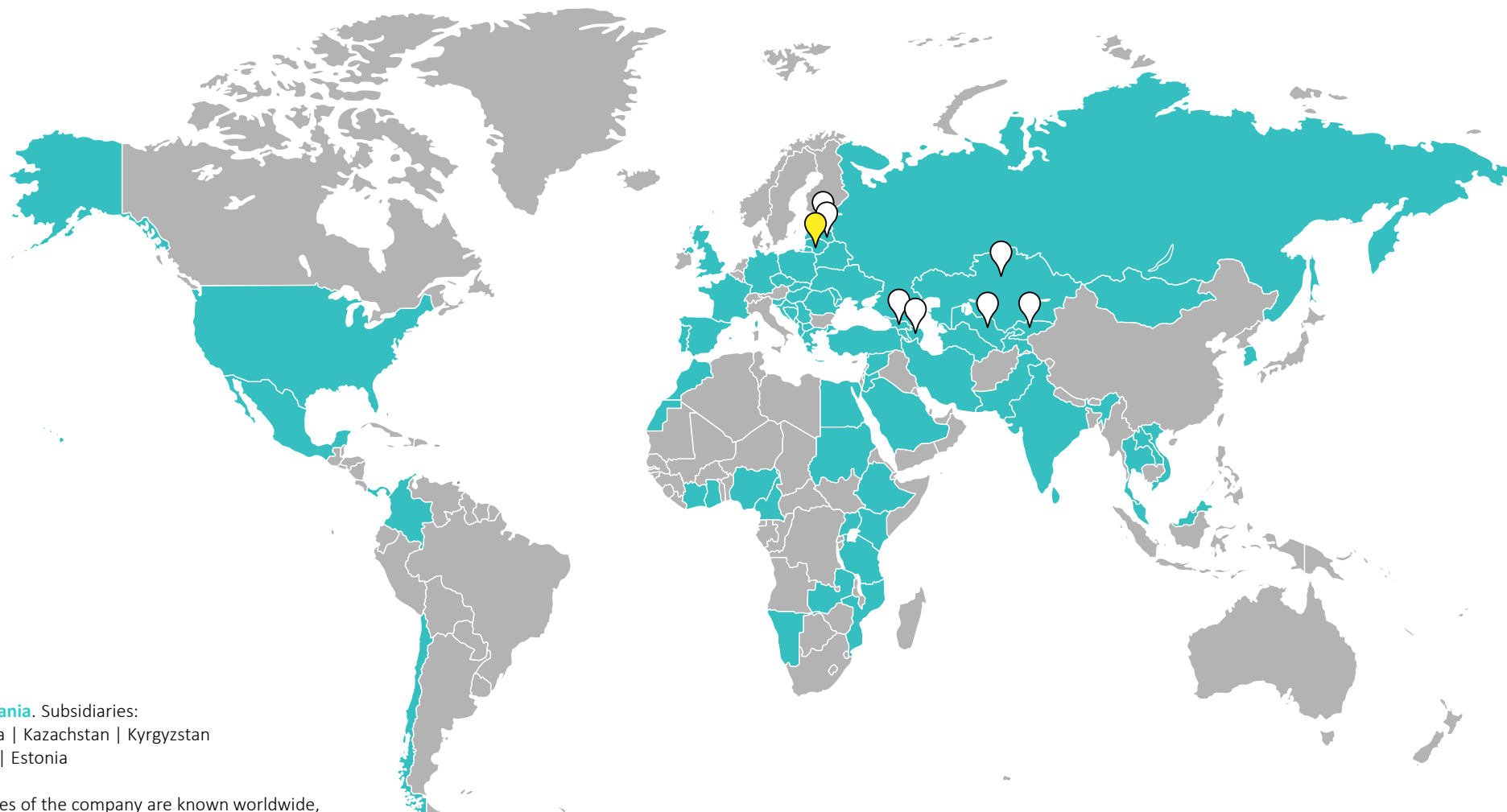
GEOGRAPHY OF ACTIVITIES



UAB „PENKIŲ
KONTINENTŲ
KOMUNIKACIJŲ
CENTRAS“



UAB „PENKIŲ
KONTINENTŲ,
INVESTICIJOS



Head office in **Lithuania**. Subsidiaries:
Azerbaijan | Georgia | Kazakhstan | Kyrgyzstan
Latvia | Uzbekistan | Estonia



Solutions and services of the company are known worldwide,
products are delivered in 80 countries of the world.

- SOFTWARE DEVELOPMENT, SALES, INSTALLATION AND MAINTENANCE
- TECHNICAL MAINTENANCE AND REPAIR OF BANKING AND OTHER EQUIPMENT
- EQUIPMENT SALE FOR BANKS AND RETAIL SECTOR
- COMPLEX OUTSOURCING
- IT INFRASTRUCTURE MONITORING
- STAFF CONSULTING AND TRAINING
- SPARE PARTS SUPPLY

Diebold Nixdorf / Wincor Nixdorf:

- Innovation SPIRIT banking 2018
- Special Achievement Banking 2007, 2013, 2014, 2017
- Best Banking Solution 2012, 2013, 2016
- Best Banking Service 2002, 2003, 2012, 2013, 2014
- Most Innovative Software Solution 2004, 2005
- Most Innovative Concept 2002, 2003, 2004, 2005

ATM Industry Association:

- Best ATM Security Technology

Lithuanian Confederation of Industrialists:

- Innovation Prize 2016
- Lithuanian Product of the Year 2001, 2005, 2006, 2007, 2008, 2012, 2017



TECHNOLOGY PARTNERS



ABOUT SARGENT&GREENLEAF



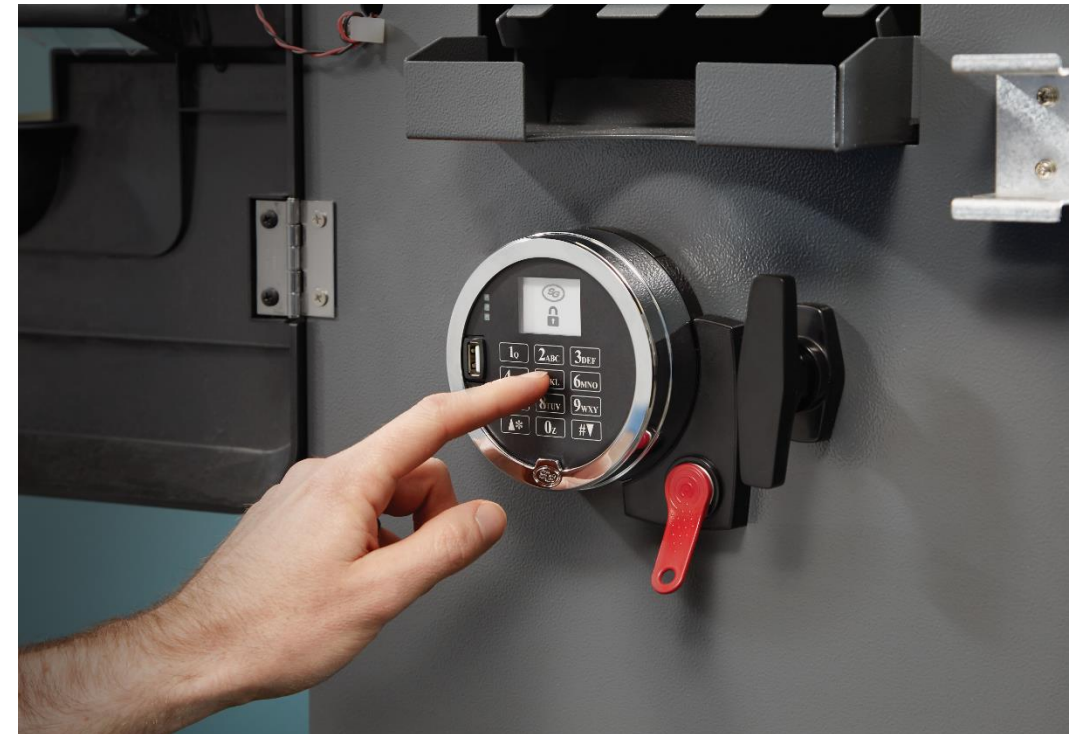
A leader in the specialized security industry, S&G designs and manufactures high-quality mechanical and electronic locks for safes, vaults, safe deposit boxes and highly sensitive SCIF environments. The company prioritizes innovation, and ensures quality by developing solutions based on unique customer needs.

Headquarters: Nicholasville, Kentucky, US

EMEA office: Ecublens, Switzerland

Sales and technical support for regions:

Europe | Near East | Africa | India



WHAT IS A-Series™

The A-Series is a superior global solution for ATM access control. It combines state-of-the-art access control software with S&G's high security lock technology to provide ATM manufacturers, banks and armored car companies with streamlined, simplified and high security ATM management.

WHERE TO APPLY

- Financial Industry
- Cash Management
- Commercial
- Residential
- Government



SOLUTIONS FOR BANKS AND ATMs

SOLUTIONS FOR BANKS

A-Series OTC Lock
ATM or Vault Access
Mgmt



Under-Counter Steel
Wide Range of Mechanical and
Electronic Safe Locks



Safe Deposit locks



LOCKS FOR ATMs

A-SERIES™
One-Time-Code
ATM Lock



LMS and LINK Software
Dispatch One-Time-Codes



FSA
Close Codes Field
Auditing



6126 Audit
+ Auto-Relock



Titan
Multi-User +
TD



Spartan
Starter/ Basic



Alarm Module
Lock Monitoring



Model 6651
Model 6642
Mechanical
3-Wheel
Combination
Lock

Key Operated Lock
Secondary Lock



A-SERIES AND A-SERIES WITH DISPLAY



A-Series™ ATM Locks

ATM Security solution that protect the most valuable assets.



A-Series™ with Display

The Faster, Easier ATM Lock– with Enhanced Security

FEATURES OF A-Series™



SECURITY

- Time limited One-time code via phone dispatch or mobile app.
- A-Seal code generated automatically when lock is closed.
- Bolt position indicator monitors the locked or unlocked bolt position.
- Duress capability via optional duress module.
- Penalty lockout after five failed attempts.

EASE & SUPPORT

- No vendor meets.
- Standard S & G Magic Module footprint.
- Universally handed.
- 10 minute average installation time.
- 24/7 technical support.

FEATURES OF A-Series™



FLEXIBILITY

Three modes of operation:

- Bank Mode: no key required, up to 30 users, 99 min time delay, Dual and Single control access options.
- Service Mode: PIN, touch key, and one-time-code required to open.
- Bank + Service Mode: utilize both modes simultaneously.

CENTRAL CONTROL

- Yes—with LMS software

AUDIT REPORTS

- Via LMS software

DURESS COMBINATION

- Yes— Bank Mode and Service Mode

AUDIT TRAIL

- A-series with display - fast, accurate USB download: 1,000 event, time- and date- stamped audit trail with multiple locks access through one device. Email audit trail with additional software;
- A-series -traditional iButton download: 400 events, time- and date- stamped audit trail with one device per lock;
- Intuitive, multi- language software with optional translator;
- Simple navigation and user-friendly functionality independent of language or experience;
- User touch key – 100 events;
- Manager touch key – 38 events.

A-SERIES WITH DISPLAY



AUDIO AND VISUAL INTEGRATION

Multiple visual elements including extra-large display screen and keypad indicator lights, combined with the beeps and braps used by all A-Series Locks, enhance the user's ability to understand, process, and act on information quickly and accurately.



EXTRA-LARGE SCREEN DISPLAY

A ground-breaking, 30-character display screen makes servicing A-Series with Display a simpler, more intuitive, and more secure option than ever before.



A-SERIES WITH DISPLAY

FASTER, MORE POWERFUL AUDITING

A-Series with Display allows audit trail downloads via iButton or incorporated USB drive. USB audit downloads feature:

- Faster download speed.
- Greater storage capacity—up to 1,000 events from multiple locks versus 400 events via iButton.
- Ability to store audit trails from multiple locks onto one flash drive.
- Audit trail email capability (without additional software).



USB DRIVE vs. DALLAS KEY/iBUTTON®

GREATER STORAGE SPACE

8 GB vs. 148 KB

FASTER DATA TRANSFER RATE

MAXIMUM 480 MB/s vs. 142 KB/s



LOCK MANAGEMENT SYSTEM



PIN Code Only

BANK MODE

**LOCK MANAGEMENT
SYSTEM**



PIN Code - Bank

**BANK AND
SERVICE MODE**

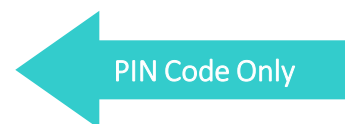
OTC - Service



OTC Only

**SERVICE MODE
(CIT MODE)**

BANK MODE LOCK CODES



LOCK FEATURES BANK MODE

Bank Mode Lock Codes

The Bank Mode offers up to 16 PIN positions, each an 8 digit code.

PIN Position

(1) 00

(2) 02-03

(4) 04-07

(10) 10-19

Position Description

Programmer Code Position

Officer Code Positions

Administrator Code Positions

User Code Positions

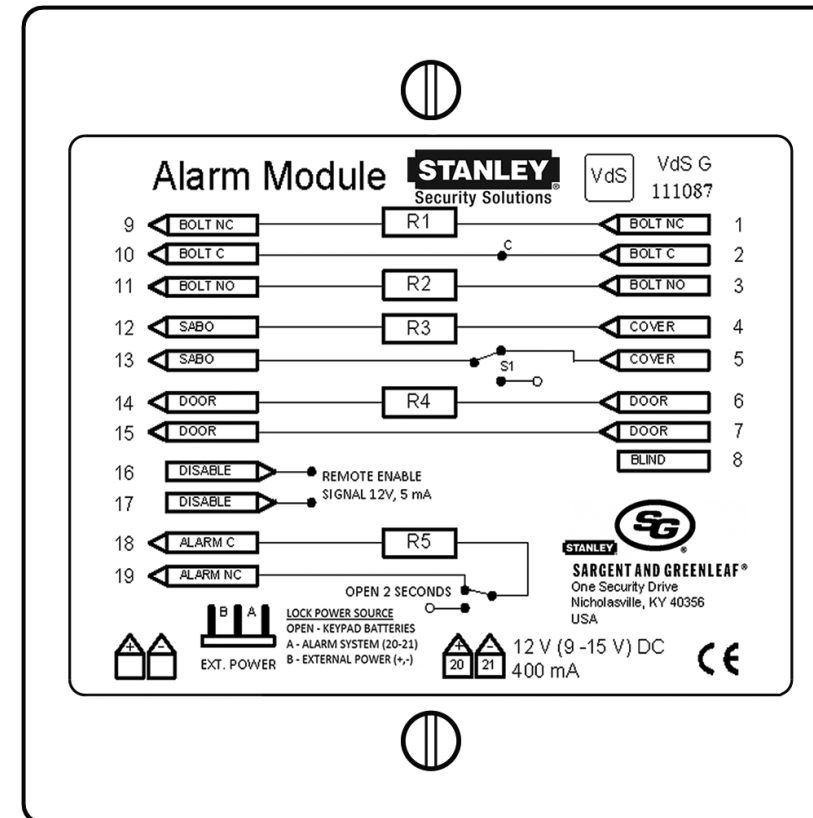
BANK MODE LOCK OPERATION

There are two user access modes:

- **Manager / Employee Mode** – Toggle users On/Off by Manager. When On, one code to open.
- **Dual Control Mode** – Two independent User Codes are needed to open the lock.

Alarm Module (optional)

Housed within the safe, this module must be connected to the lock to use the duress, alarm, and remote disable features.



BANK MODE LOCK OPERATION

DOWNLOAD AUDIT TRAIL

Keypad Strokes

- Snap the Red key into the Blue-Dot Reader.
- Enter: 28 (AT)* then the 8-digit Programmer PIN Code
- The amber LED will remain on during the download (about 20 seconds) followed by 3 Beeps

Lock Feedback



SAMPLE AUDIT REPORT



Sargent & Greenleaf Inc. Lock Audit

Date : 3/6/02

Report Parameters : Lock ID : 205578049806
ATM ID : ATM00461247
Site Name : Downtown Bank - Island

User	Operation Description	Result	Session Start	Duration	ey ID /Bank User	KeyType	Dispatch
John Smith	Download Audit Log	Success	2002/03/06 16:56:00	0	000000095EBE	Mngr	BAC
Service User	Service Error	Lockout started	2002/03/06 16:28:00	0	0000000350CB	User	1CB
Joe Duncan	Access Lock	Success	2002/03/06 16:27:00	0	000000035482	User	BAC
Bank User	Lock Opened	Success	2002/03/06 16:26:00	0	19	Mngr	none
Service User	Access Lock	Success	2002/03/06 16:23:05	1	0000000350CB	User	1CB
John Smith	Program Bank Features	Success	2002/03/06 16:23:00	0	000000095EBE	Mngr	BAC
Bank User	Lock Opened	Success	2002/03/06 16:22:10	0	19	Mngr	none
Bank User	Lock Opened	Success	2002/03/06 16:22:05	0	19	Mngr	none
Bank User	Comb. Add - Auth. Code	Success	2002/03/06 16:22:00	0	02	Mngr	none
	Comb. Add/Delete - 2nd Code		2002/03/06 16:21:59	10			
	Comb. Add/Delete		2002/03/06 16:21:58	19			
Sally Jones	Access Lock	Success	2002/03/06 16:21:05	0	00000003534B	User	BAC
Sally Jones	Reset User Touch Key	Success	2002/03/06 16:21:00	0	00000003534B	User	BAC
Sally Jones	Access Lock	Secure Code not Taken	2002/03/06 16:16:00	2	00000003534B	User	BAC
Bank User	Lock Opened	Success	2002/03/06 16:12:10	1	10	Mngr	none
Bank User	Lock Enabled for Single Use	Success	2002/03/06 16:12:05	0	02	Mngr	none
Bank User	Lock Disabled for Single Use	Success	2002/03/06 16:12:00	0	02	Mngr	none
Joe Duncan	Access Lock	Success	2002/03/06 16:05:00	6	000000035482	User	BAC
John Smith	Set clock/calendar	Success	2002/03/06 16:02:00	0	000000095EBE	Mngr	BAC
Service User	Initialization	Success	2002/03/06 15:57:00	0	F40000000000	Mngr	0090

SERVICE MODE

(One – Time Code (OTC) Mode)



We do what ATM manufacturers do

To authenticate the user, we combine two forms of security for a higher level than any one form.

As on the front of the ATM we require a token (a key) and a one-time code in the opening process.

FORMS OF SECURITY

1. What you have - Key, Card, etc.



2. What you know – Code

1 2 3 4 5 6 7 8 #

DALLAS (MAXIM) i - BUTTON® TOUCH KEYS



Red Manager Key – Used for Programming functions and for downloading Audit Trail



Black User Key – Only required when in Service Mode (OTC Mode). No keys required in Bank Mode.

For the token we use a Dallas DS1995 i-Button with it's unique factory-lasered 64-Bit registration number for absolute traceability.....

No two keys are alike and S&G records all 16 digits of the alpha/numeric unique number.

*Equivalent to a mechanical key with 72,057,594,037,936 (72 quadrillion) key cuts!

LOCK MANAGEMENT SYSTEM (LMS)



Operator Selects

- Who: User and Touch Key
- Where: ATM and Lock
- What: Access Lock
- When: Time and Date
- Time Window: 4, 8, 12 , 24 hours

PIN 1,2,3,4, #



98765432

Authorized
User PIN Code

Authorized
High-Security Key

8-Digit One
Time Code



HOW IT WORKS?

1. i-Button Key



2. User PIN (1 2 3 4 #)

3. OTC (One-Time Code)

Generate Single Operation Code

ATM ID :

Lock ID :

User :

PIN :

TouchKey :

Command :

Start Date : Start Hour : Time Block :

Operation Code :

Lock Status: Secured

- ☐ Lock Is Open
- ☐ Door Is Open
- ☐ Tampered
- ☐ Lockout

Provides ability for seamless integration of LMS functionality into existing front-end systems



LMS FUNCTIONS AVAILABLE THROUGH BRIDGE

- Generate and close OTC
- Retrieve active operator codes
- Modify or delete resources
- Provides audit trail of all activity

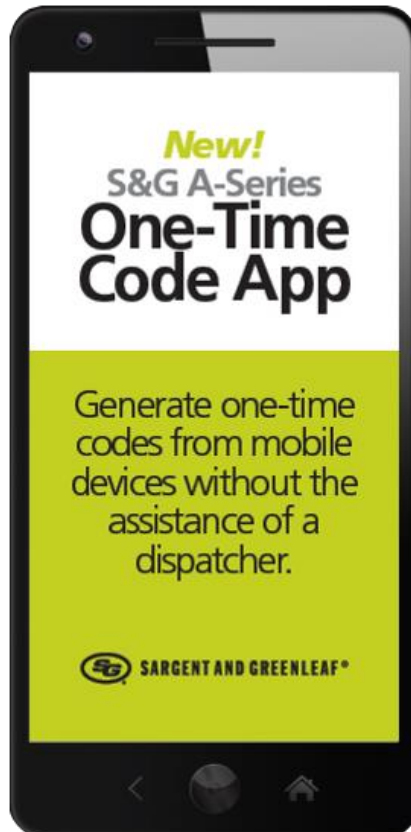


One-Time Code BENEFITS

- Code is valid for only one use within the specified time window
- Code will automatically expire if not used
- Code cannot be passed to another user
- One code does not contribute to the generation of any other code
- Codes may be created singularly or in batch for route operation



A-Series™ ONE-TIME CODE MOBILE APP



GREATER CONVENIENCE

Much faster than a dispatch call, technicians get a one-time code immediately from a mobile device.

MORE MANAGEMENT CONTROL

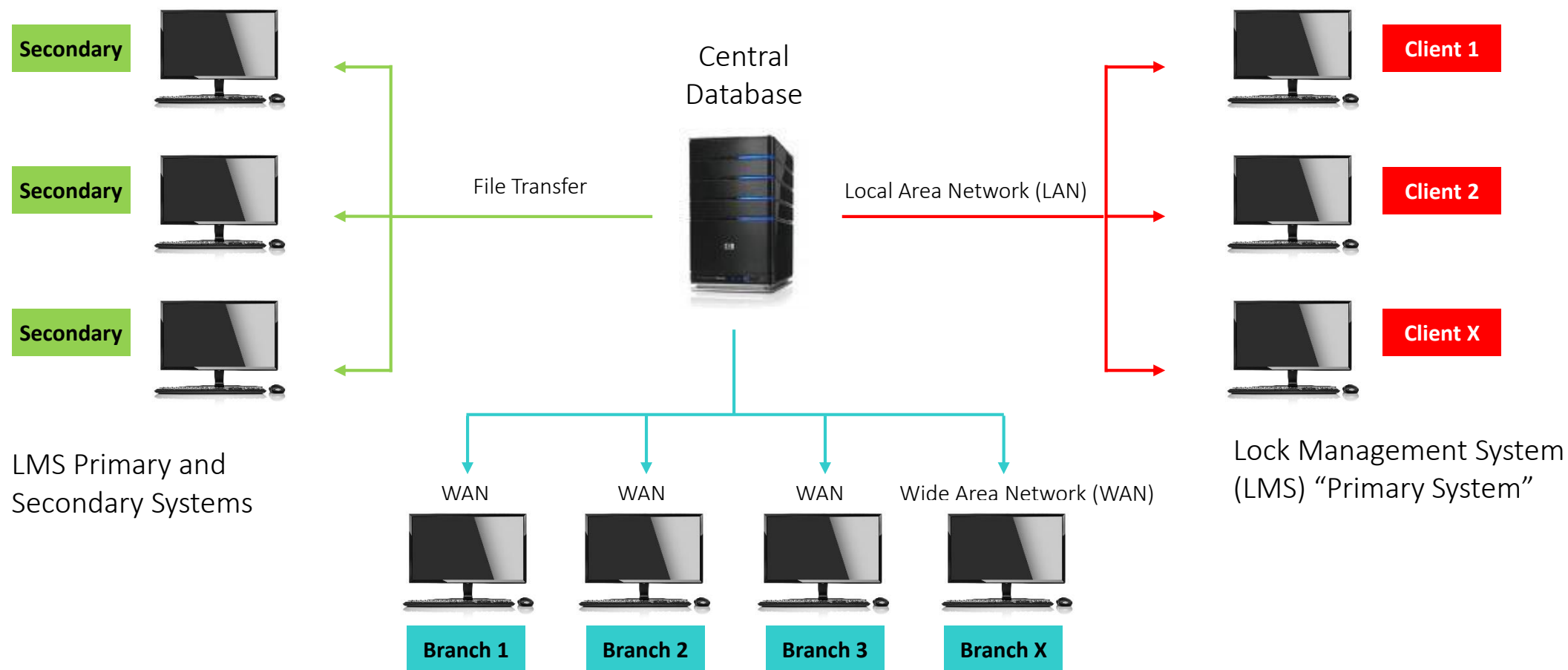
Supervisors assign time windows for network access and codes are only live during that time block. PIN, key, and code combinations are time-stamped for easy oversight.

IMPROVED SECURITY

Quicker code generation reduces premise time, while ongoing call center support ensures a quick response if help is required. No close seal codes are required*—eliminating the risk of out-of-sync codes.

**Although A-Series Locks do not require a close seal, for user processes that do require that step, the A-Series with Display offers an A-Seal value shown automatically on the screen.*

FLEXIBLE SYSTEM ARCHITECTURE



LMS Primary System (LMS) „Decentralized”

WHY A-SERIES?



1. Locks install in half the time of competitor lock.
2. Reliable and user friendly Windows software.
3. WAN and LAN network ready.
4. Flexible Microsoft Crystal Reports.
5. Eliminate vendor meets.
6. Accurate Audit Trail.
7. Lower operating costs.
8. No more:
 - Bank Mode keys
 - Switching of combinations
 - Out of synch combinations
 - Close Codes
 - Key time drift

More information of features:

<https://www.bs2.lt/ru/kompleksnye-resheniya/>
www.sargentandgreenleaf.com



THANK YOU

■ Contact person BS/2

Position Name Surname
+370 000 00000 | name.surname @bs2.lt

■ JSC “Penkių kontinentų bankinės technologijos”

Kreiviu str. 2, LT-08248 Vilnius, Lithuania
+370 5 266 45 95 | swsales@bs2.lt | www.bs2.lt