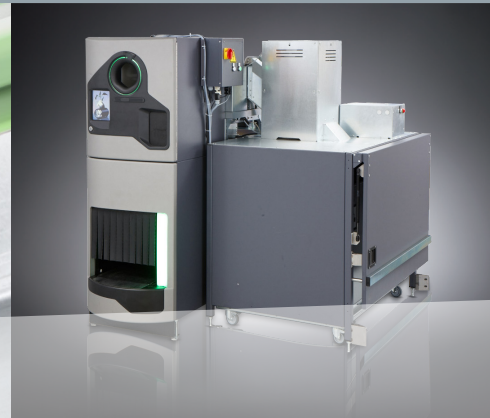


Backroom components



Modular system platform Flexible, optimized solutions

Wincor Nixdorf's modular backroom components guarantee space-saving, economical and technically effective reverse vending solutions.

Our modules for transport, sorting, compaction, collection and crate handling can be combined in different ways to meet a whole host of empty beverage container collection requirements.

From consulting and solution design to the installation of customer-specific backroom equipment for automated beverage container recovery – Wincor Nixdorf offers complete solutions from a single source.

Encourage recycling

“Since the turn of the millennium, the recovery of waste products has moved into the foreground, making recycling the preferred choice.” Wincor Nixdorf has made it a top priority to protect the environment by providing effective reverse vending solutions to support recycling.

Efficient technology

A modular platform and standardized components ensure optimized, economical and space-saving solutions.

New sorting modules offer highly flexible handling of single containers. Modern technology guarantees energy efficiency.

Single components

A broad portfolio is available for the transportation of single containers and crates from the point of acceptance at the reverse vending machine to the point of compaction/collection.

Sorting stations separate individual containers according to material type and color, and compactors reduce the volume of PET bottles and cans for greater logistical efficiency.

**WINCOR
NIXDORF**



Services

Wincor Nixdorf offers fast, professional manufacturer services as an option for its RVS backroom components. These services are need-based to enable maximum system availability and security worldwide.

Remote diagnostics for the individual components increase the availability of your reverse vending systems. If required, our global technical service organization can also provide on-site support.

Published by
Wincor Nixdorf Technology GmbH
 Am Vogelherd 67
 98693 Ilmenau Germany

Phone: +49 3677 86 21 00
 Fax: +49 3677 86 21 99
 info.rvm@wincor-nixdorf.com
 www.wincor-nixdorf.com/rvm

© Wincor Nixdorf International GmbH

All rights, including rights created by patent grant or registration of a utility model or design, are reserved. Delivery subject to availability, subject to change for technical reasons.

Order no.: R23101-J-Z731-1-7600

Printed in Germany, November 2012

Handling of reusable containers

Standard components such as bottle tables and roller conveyors for crates are used for the transportation and interim storage of reusable beverage containers in the store's storage area.

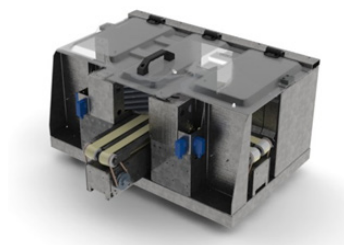


Each reverse vending solution includes sensors and sequence control systems for fully automated monitoring and control of the crate conveyor line.

The wide range of available components ensures the optimal use of the available space.

Transport and sorting station

The sorting station combines a transport line with a sorting component for single beverage containers.



Bottles and cans are transported lying down and can be redirected and separated into three fractions on a minimal footprint. The number of fractions can be increased by cascading several sorting stations. The sorting station is therefore the direct interface between the reverse vending machine and the collecting/compacting point.

Compactor

A new generation of compactors is available to reduce the volume of both PET bottles and cans.



These compact, high-performance cutting units ensure excellent compacting results to optimize logistic processes such as storage and transportation, thus guaranteeing environmentally friendly recycling.

Depending on the available space and the customer's requirements, collection containers can be provided in euro-pallet and half euro-pallet sizes.

TECHNICAL DATA

Transport and sorting station

- Footprint in mm (L x W x H): variable x 600 x 1,600
- Minimum weight (configuration 600 mm x 600 mm): 55 kg
- Power supply: 3 ~ 400 V/50 Hz
- Conformity: declaration of incorporation for partly completed machinery, CE conformity for complete reverse vending system
- Temperature range: +10 to +40 C°

Compactor

- Footprint in mm (L x W x H): 1,300 x 900 x 1,620 plus flaps and stand
- Weight: 225 kg (1 cutting unit), 275 kg (2 cutting units)
- Power supply: 3 ~ 400 V/50 Hz
- Conformity: declaration of incorporation for partly completed machinery, CE conformity for complete reverse vending system
- Temperature range: +10 to +40 C°