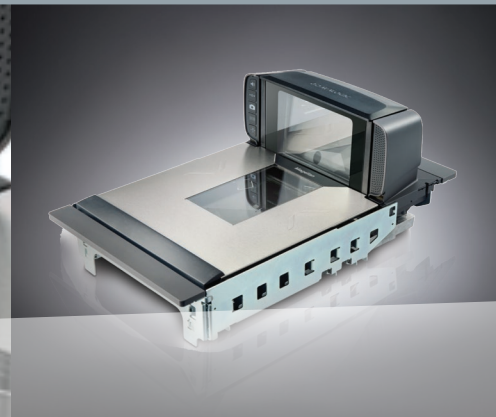


High-Performance Bioptic Scanner EL70



High-Performance 2D Multi-Plane Image Bioptic Scanner

The High-Performance 2D Multi-Plane Image Bioptic EL70 scanner is suitable for use in the food retail and wholesale trade, self-service and other retail trade with a high throughput. The used imaging technology provides superior performance in terms of the omnidirectional detection and decoding of linear, 2D and GS1 Databar™ labels. The power of full imaging technology becomes particularly evident with labels that are hard to read, such as low-contrast or damaged barcodes. In addition, enormously the lighting technology increases the usage in new applications e.g. reading bar codes from smartphones and other mobile devices, identification cards documents and goods coupons. The design of the EL70 is identical in its dimensions for your counter-cutting to currently available bioptic scanner products on the market. Due to this fact, an integration into existing checkout installations is easily possible. The large scanning window and its resulting scan area is comparable with bioptic scanners.

Another feature of the EL70 is a built-in USB port and MicroSD card reader to support software administration and maintenance.

The software-based scanner functions can be easily modified even after the initial installation. In addition, a deactivation antenna for connecting a Checkpoint EAS Systems is included. Below the horizontal Datalogic Clear™ glass scan window of the EL70 a checkout scale can be installed as additional option. The existing auxiliary interface ports provide, amongst others the possibility to connect a handheld scanner.

The ScaleSentry™ Technology of EL70 Magellan™ 9400i in conjunction with the installation of a checkout scale unit is a further option, which checks on the two main sides of the top platter via an invisible infrared beam, if the article to be weighed is positioned correctly to prevent weight losses, thereby reducing inventory discrepancies.

In addition, 2D Customer Service Scanner CSS for the EL70 is available. The 2D customer scanner can be installed, depending on the ergonomic requirements of the customer installation on the right or left, installed at the back or individually independently of the housing of the EL70 Magellan™ 9400i at point of sale. Reading of barcode labels

from smartphones made by the customer at the 2D customer scanner can be executed in parallel to the traditional sales process of the cashier.

The optional Digimarc® recognition is only available for the EL70 Magellan™ 9400i. Compared to the EL69 Magellan™ 9300i the EL70 is equipped with an additional, third processor and is prepared for future feature enhancement and options. Digimarc® recognition is based on the established, digital watermark technology of Digimarc®. A Digimarc® watermark is invisible repeated over the entire product package and includes the same data as a traditional barcode. This new product recognition method of EL70 simplifies the product identification, as the barcode does not need to be searched by the user on the product package.

**WINCOR
NIXDORF**



The High-Performance 2D Multi-Plane Image Bioptic Scanner EL70 overview:

- Suitable for use in self-service, food retail store and wholesale
- Recognition of linear 1D, 2D- and GS1 DataBar™ barcodes
- Omni-directional barcode recognition also from smartphone displays
- Functional design
- Optional integration of a checkout scale
- Excellent, multi-code scan performance with high throughput
- USB-Port and MicroSD card reader for service and software administration
- Image Capture mode
- Optional 2D Customer Service Scanner (CSS)
- Easy integration into existing checkout installation
- Optional ScaleSentry™ Technology
- Optional Digimarc® watermark recognition
- Multiple interface
- Low power consumption
- Supported by the powered interface on the BEETLE system
- Plug&Play compatibility Wincor Nixdorf ProBase UPOS

Published by
Wincor Nixdorf International GmbH
 Heinz-Nixdorf-Ring 1
 33106 Paderborn
 Germany
 Tel.: +49 (0) 52 51 / 6 93-3901
 Fax: +49 (0) 52 51 / 6 93-3903
 info.retail@wincor-nixdorf.com
 www.wincor-nixdorf.com

© Wincor Nixdorf International GmbH

Printed in Germany, August 2015

The EL70 can be either connected as USB device with 12V POT power from the BEETLE or as an RS232 device with external power supply operated. The multiple interface of the

High-Performance 2D Multi-Plane Image Bioptic scanner EL70 enables simple exchange of the interface cable when the system is changed and so protects investments.

TECHNICAL DATA

System versions

High-Performance 2D Multi-Plane Image Bioptic Scanner, multi-interface

- Magellan 9400i DatalogicClear™ Glass, medium length, with Checkpoint EAS, scale prepared, without ScaleSentry™ (EL-7012)
- Magellan 9400i DatalogicClear™ Glass, medium length, with Checkpoint EAS, scale prepared, with ScaleSentry™ (EL-7032)

Additional interface cable alternatives

- Straight RS232 for usage with external power brick 4.50 m (EL-DLS-RS45)
- Straight PoweredUSB 12V 4.50 m (EL-DLS-US45)

Power brick / alternative power line cord

- External power brick 12V (EL-5455POW-EXT)
- Power line cord EU, black (KB-3037)
- Power line cord UK, black (KB-3039)
- Power line cord CH, black (KB-3038)
- Power line cord USA, black (KB-3030)

Optional 2D customer scanner (Customer Service Scanner)

- 2D scanner for barcode recognition Smartphone OmniMount (EL-6970-MCSS)

Optional accessories

- EAS interlock cable for Magellan 9300i/9400i (EL-6970-EAS)

Interfaces

- RS232
- USB

Power supply

- RS232
 - Via power brick 12V and country specific power line cord (EL-5455POW-EXT + KB-303x)
- USB
 - Via PoweredUSB 12V interface cable (EL-DLS-US45)
- Power consumption
 - 100 - 240V AC / 50 - 60 Hz
 - 12 Watt (Operating)
 - 11 Watt (Sleep)

Environmental conditions

- Operating temperature:
 - 10 to +40 °C
- Storage temperature:
 - 40 to +70 °C

- Relative humidity
 - 5 to 95% rel. (without condensation)

Reading characteristics

- Illumination
 - Several LED's
- Ambient light:
 - Indoors: <4844 Lux/450 footcandle
 - Outdoors: <86114 Lux/8000 footcandle
- Image Recognition
 - Graphic format: BMP, JPG
- Sides Read/Scan Zone
 - All six sides (5 sides plus 2D Customer Service Scanner CSS)

Barcode types

Linear 1D Barcodes

- UPC-A / UPC-E
- EAN-8 / EAN-13
- GS1 Databar™ Codes
- GS1 Databar™ Stacked
- GS1 Databar™ Expanded Stacked
- GS1 Databar™ Stacked Omni-directional
- Interleaved 2 of 5
- Standard 2 of 5
- Code 128 / GS1-128
- Code 39
- Code 93
- Codabar

2D Barcodes

- PDF417
- MicroPDF417
- Datamatrix
- QR Code
- Micro QR Code
- Aztec Code

Approvals

- CE
- UL (US & Canada)
- KCC / Korea
- VCCI / Japan
- China ROHS
- EU ROHS

Dimensions

- Height: 232 mm
- Width: 292 mm
- Depth: 399 mm

Dimensions when installed

- Above checkout desk: 130 mm
- Below checkout stand: 102 mm

Weight

- 6.1 kg